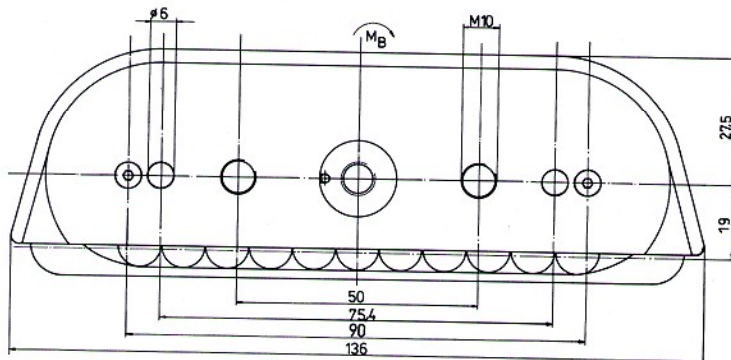
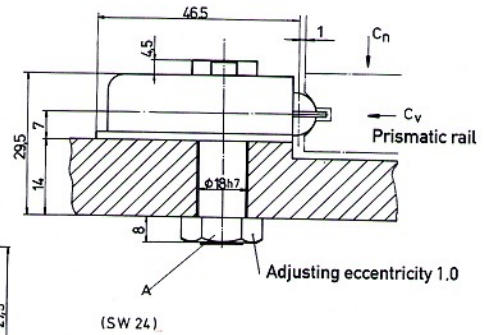
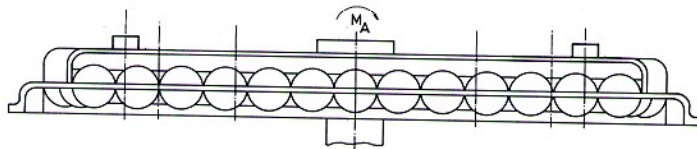


SINGLE SEGMENT ES 5 with 5 mm balls



SINGLE SEGMENT ES 10 with 10 mm balls

■ Play-free adjustment (prestressing) of the single segments against the prismatic guide rails or the prismatic shaft is effected by means of the adjusting eccentric A (see drawing).

Order No.	Admissible load (per segment)		Admissible static moments (per segment pair)	
	C_n [N]	C_v [N]	M_A [Nm]	M_B [Nm]
ES 5	4000	4000	90	90
ES 10	9000	7500	202	202